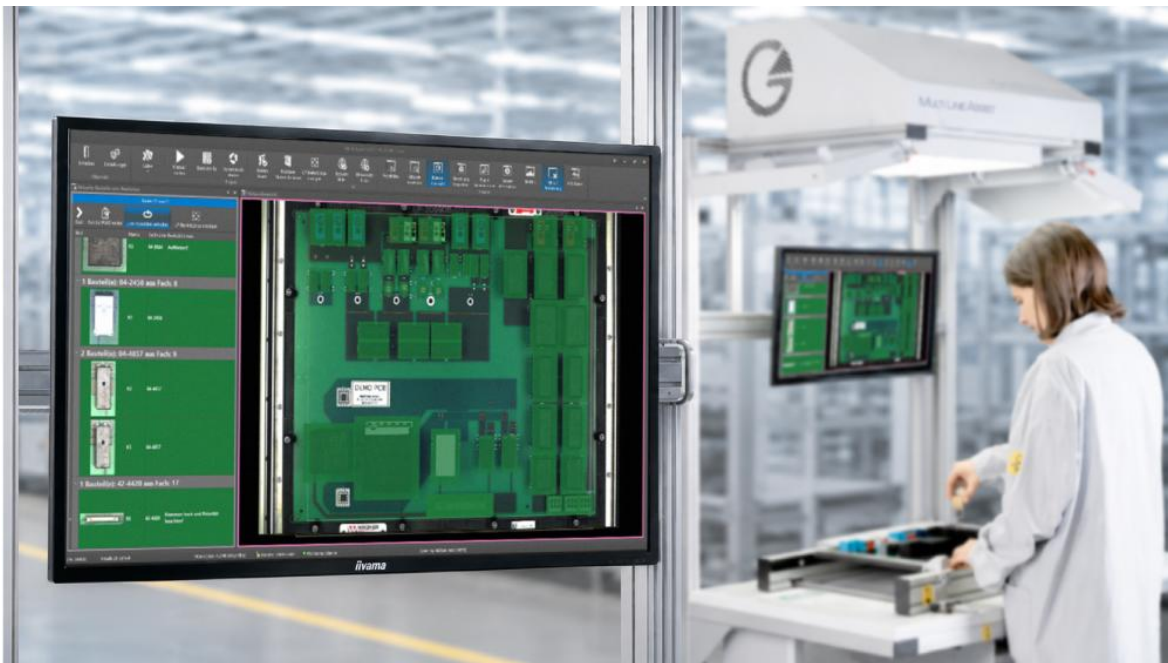


Press Release

Operator assistance system makes assembly processes efficient and user-friendly

Multi Line Assist, featuring innovative user guidance, a component assistant, and automatic final testing, simplifies guided THT manual assembly

GÖPEL electronic has further developed and enhanced the operation and features of its operator assistance system [Multi Line Assist](#): Assembly instructions are now projected directly into the field of view on the assembly table and onto the assembly. As a new feature, all component outlines for a part number or just the outlines of a single component can be displayed simultaneously according to the assembly sequence. This simplifies manual assembly. The placement plan with all example images is automatically generated from the inspection program. This eliminates the need for duplicate programming effort for placement assistance and inspection. A new component assistant in the software also enables quick and convenient programming of component inspections. This makes work processes more efficient and more user-friendly for the operator.



Multi Line Assist is used both at manual THT assembly stations and in automated production lines. Through intuitively guided placement instructions and automatic monitoring of the assembly, the

Press Contact:

GÖPEL electronic GmbH
Stefan Böttinger
Göschwitzer Straße 58/60
07745 Jena

Tel.: +49 (0)3641-6896-741
Fax: +49 (0)3641-6896-944
E-Mail: presse@goepel.com
Internet: www.goepel.com

system ensures safety and quality, while placement times are significantly reduced. Thanks to innovative MagicLight technology, the device provides high-contrast inspection images, reliable defect detection, and consistently comfortable working conditions. A new dimming function for the workstation lighting allows user-specific adjustment of the assembly brightness.

The integrated AOI module checks component placement either after each step or at the end of the assembly process and reliably detects errors such as incorrect polarity, missing components, or deviations in color and labeling. All results are documented and can be statistically evaluated as well as transferred to MES systems.

Multi Line Assist is available in three versions: as a complete solution with a height-adjustable assembly table, as a tabletop system for retrofitting existing workstations, and as an integration module. All core components are combined in the base module, which simplifies installation and reduces space requirements. The software is based on the proven PILOT AOI platform, which enables rapid program creation based on CAD data. With the new software extension for the [Multi Line Assist](#), GÖPEL electronic is setting another milestone toward digitalization and the Smart Factory.

About GÖPEL electronic

GÖPEL electronic develops and manufactures innovative electrical and optical test, measurement, and inspection equipment for electronic components and printed circuit board assemblies as well as industrial and automotive electronics systems. GÖPEL electronic has four business units:

- Automotive Test Solutions
- Embedded JTAG Solutions
- Inspection Solutions AOI-AXI-SPI-IVS
- Industrial Function Test

The company is active worldwide, with its own subsidiaries as well as through distributors, and generated sales of approximately 40 million euros in 2023 with 240 employees.

Further information: www.goepel.com/en

Press Contact:

GÖPEL electronic GmbH
Stefan Böttinger
Göschwitzer Straße 58/60
07745 Jena

Tel.: +49 (0)3641-6896-741
Fax: +49 (0)3641-6896-944
E-Mail: presse@goepel.com
Internet: www.goepel.com