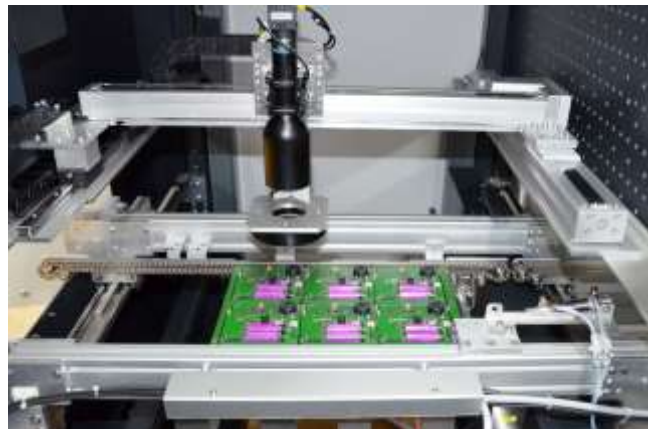


## Ersa Pushes for Smarter Systems – One Step Closer to Artificial Intelligence

**Plymouth, WI — February 2018** — Kurtz Ersä North America, a leading supplier of electronics production equipment, is pleased to announce that it has developed several new features for its selective solder equipment, including VERSASCAN, VERSAEYE and Ersä CAD Assistant 4. The VERSASCAN module can look at boards being presented to the machine and confirm if all of the components are on the board and if the polarity is correct before they enter the machine. This can be paired with another feature called VERSAEYE that looks for any defects on the board. Finally, Ersä CAD Assistant 4 offers intuitive and automated offline programming with a graphical user interface and template library.

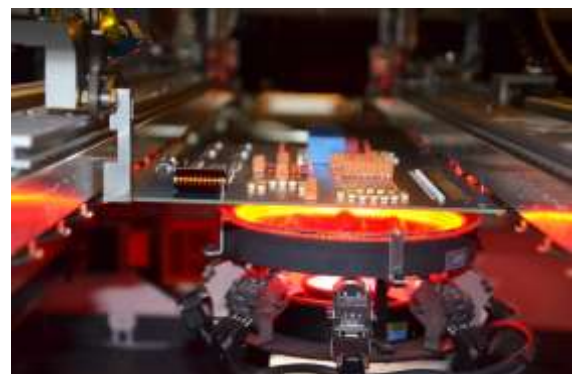
The **VERSASCAN** feature consists of an X-Y axis system that is integrated into the modular machine design. Its camera unit enables the recognition of up to nine multi-codes as well as Bad Board recognition and the PCB direction. By Bad Board Detection, reject parts are detected and not further processed. The feature checks to see if the board is complete with the correct components placement and orientation of the board.



The **VERSAEYE** module is optimized for the inspection of THT solder joints and is, as a separate module, attached to the soldering system directly after the last soldering module. It can be equipped with up to nine cameras – one bottom and eight side cameras. The VERSAEYE can move in x-, y- and z- directions to enable an all-around inspection of the solder joints at a 45° angle.

Highlights include:

- System optimized for wave and selective soldering systems
- Compatible with work piece carriers
- Modular inspection possible: bottom, top or bottom & top



- Available with up to 9 cameras per module
- I/O interface
- Classification of inspection results at all times

Ersa's solder program editor **CAD Assistant 4** makes programming a fast, intuitive and comfortable process. It enables programming offline, while the machine is running. Compatible CAD formats like ODB++ and other 3D/2D sources make programming much easier and safer. These programs can be used without any detours directly on the machine because of the full integration with the operating software of the machine, ERSASOFT 5.



“These features are allowing us to get closer to almost autonomous soldering systems with intelligence built in,” commented Albrecht Beck, President of Kurtz Ersa NA. “We are striving to exceed the market needs in the dynamic world of electronic soldering.”

For more information about Kurtz Ersa North America, visit [www.ersa.com](http://www.ersa.com).



Ersa Kurtz North America Inc.

1779 Pilgrim Road | Plymouth, WI 53073 | USA | Phone: + 1 920 893 1779 | Fax: + 1 920 893 1562 | e-mail:

[ernie.grice@kurtzera.com](mailto:ernie.grice@kurtzera.com) | Web: [www.ersa.com](http://www.ersa.com)

**Ersa Inc.**

German Headquarters:

Ersa GmbH | Leonhard-Str. 24 | 97877 Wertheim | Tel. +49 9342/800-0 | e-mail: [info@ersa.de](mailto:info@ersa.de) | Web: [www.ersa.de](http://www.ersa.de)

Kurtz Ersa Mexico, S.A. DE C.V.

Felipe Angeles 52, Piso 2 | Col. Bellavista | 01140 Mexico, D.F. | R.F.C.: KER-130507-857 | Phone: +52 33 3106 8003 | e-mail: : Estrada, Ismael [Ismael.Estrada@kurtzrsa.com](mailto:Ismael.Estrada@kurtzrsa.com) | Web: [www.ersa.com](http://www.ersa.com)