



Knowledge in Process

## ***For Immediate Release***

### **Speedline Launches Benchmark™ 2.0 Software with Multiple Enhancements**

FRANKLIN, MASS – July 5, 2007 – Speedline Technologies has launched Benchmark 2.0, the latest version of their proprietary machine operating software, which debuts on the MPM Accela™ printer. This new release offers significant post-print inspection enhancements, integration of bar code scanning for product traceability and process verification, singulated processing of indexed Auer boat substrates, and support for CAMX machine data streaming per the IPC-2541 specification.

Lead-free initiatives, combined with the trend toward miniaturization, have imposed great challenges on electronics manufacturers to ensure quality, without hampering ongoing efforts to increase throughput in their printing process. Benchmark addresses these challenges in the 2.0 release with the inclusion of SpeedVision, a high speed inspection architecture that provides improved board area inspection quantitatively (with data) at line speed. SpeedVision significantly increases the speed of contrast-based pad coverage inspection, and texture-based BridgeVision® and StencilVision™ through the use of full field-of-view processing, rapid image acquisition and optimized camera travel. The resultant decrease in inspection time ranges from 40 to 70 percent.

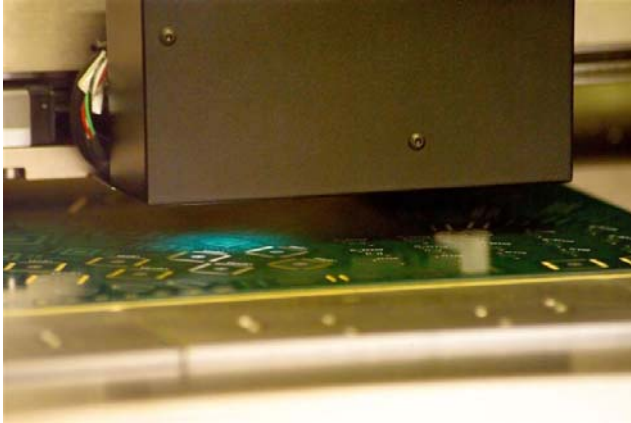
Benchmark 2.0 provides support for an externally mounted bar code scanner that can link the substrate identification code with SPC data for product traceability. A handheld scanner is also available for use with the Benchmark 2.0 process verification feature that enables confirmation of various process materials, such as the substrate, squeegees, stencil, paste and tooling.

These enhancements augment Benchmark's strong industry track record as an easy-to-use package that requires minimal operator training. The Windows®-based software utilizes a familiar graphical user interface (GUI) with step-through tabs for easy, sequential programming.

The GUI provides wizards that guide the operator through troubleshooting and utility routines to facilitate rapid return to production.

Benchmark 2.0 began shipping with Speedline's MPM Accela printer in May. For more information, visit [www.speedlinetech.com](http://www.speedlinetech.com).

# # #



CAPTION: Benchmark 2.0 Directs Camera Vision Probe

High resolution graphic image is available at: [www.speedlinetech.com/mediaimages/](http://www.speedlinetech.com/mediaimages/)

Image file name: MPM Momentum Vision System

#### About Speedline Technologies

Speedline Technologies is the global leader in process knowledge, services and manufacture of capital equipment used in printed circuit board assembly and semiconductor industries. Based in Franklin, Massachusetts, USA, the company markets five best-in-class brands: Accel microelectronics cleaning equipment; Camalot dispensing systems; Electrovert wave soldering, reflow soldering and cleaning equipment; MPM stencil and screen printing systems; and Protect global services, support and training solutions. Speedline Technologies was named Frost & Sullivan's "2005 Surface Mount Technology Company of the Year," and has earned their "2006 Competitive Strategy Leadership Award."

For more information about Speedline Technologies visit [www.speedlinetech.com](http://www.speedlinetech.com) or contact Speedline at:

- USA: Speedline Technologies, 16 Forge Park, Franklin, MA 02038. Tel: +1-508-520-0083. Fax: +1-508-520-2288. Email: [info@speedlinetech.com](mailto:info@speedlinetech.com).

- Europe: Speedline Technologies GmbH, Im Gefierth 14, 63303 Dreieich, Germany.  
Tel: +49 (0) 6103/832-0. Fax: +49 (0) 6102/832-299. Email:  
info.europe@speedlinetech.com.
- Asia: Speedline Technologies Asia Pte Ltd, 150 Kampong Ampat, #05-08 KA Centre,  
Singapore 368324. Tel: +65 6286-6635. Fax: +65 6289-9411. Email:  
asiamarketing@speedlinetech.com.

Speedline Contact:

Keith Favre, VP Marketing and Business Development  
kfavre@speedlinetech.com  
508-541-4877

Media Contact:

Bob Schreitmueller  
Apogee Business Consulting, LLC  
bob@ReachApogee.com