



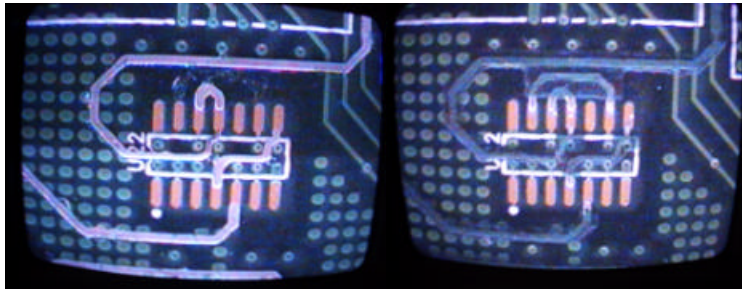
Contact: Art DesMarais
(603) 393-5257
artd@additive.com

PRESS RELEASE

ADDITIVE CIRCUITS, INC. ANNOUNCES SOLID COPPER PROCESS TO REPLACE JUMPER WIRES AND ADD NEW COMPONENTS

Laconia, New Hampshire- September 26, 2007- Additive Circuits, Inc. is now offering the latest PCB modification process in North America. After thirteen months of development followed by over eleven thousand production boards Additive is now ready to serve OEM and EMS customers.

The latest process applies a new layer of *solid copper* on the bare PCB to make new trace connections and add SMT pads. The company has also added traces under BGA components and has processed both RoHS and non-RoHS compliant boards.



According to Arthur DesMarais, President, the transition to solid copper and RoHS compliance was prompted by the need to be capable on most or all surface finishes while exhibiting excellent electrical performance. “Customers needed an ECO alternative to hand rework that was compatible with their surface finishes and could be utilized worldwide”, DesMarais says. “Customers in North America require flexibility from suppliers to handle small and medium volumes while being capable of large volumes when the need arises. We acknowledge the many fine rework companies that can handle ECO work on assemblies. Our niche is to place the ECO on the board prior to assembly to allow customary assembly thru-put and yields. This approach often becomes the least expensive and highest quality method.”

For more information contact Heather Yerry, heathery@additive.com